

Customer :

customer

Customer part :

customer part

Comment :

Comment

S1=2.02

S2=3.04

Tmax=464

Tp S2=503.0

PI=0.4

HI=119

Sample =1667.10

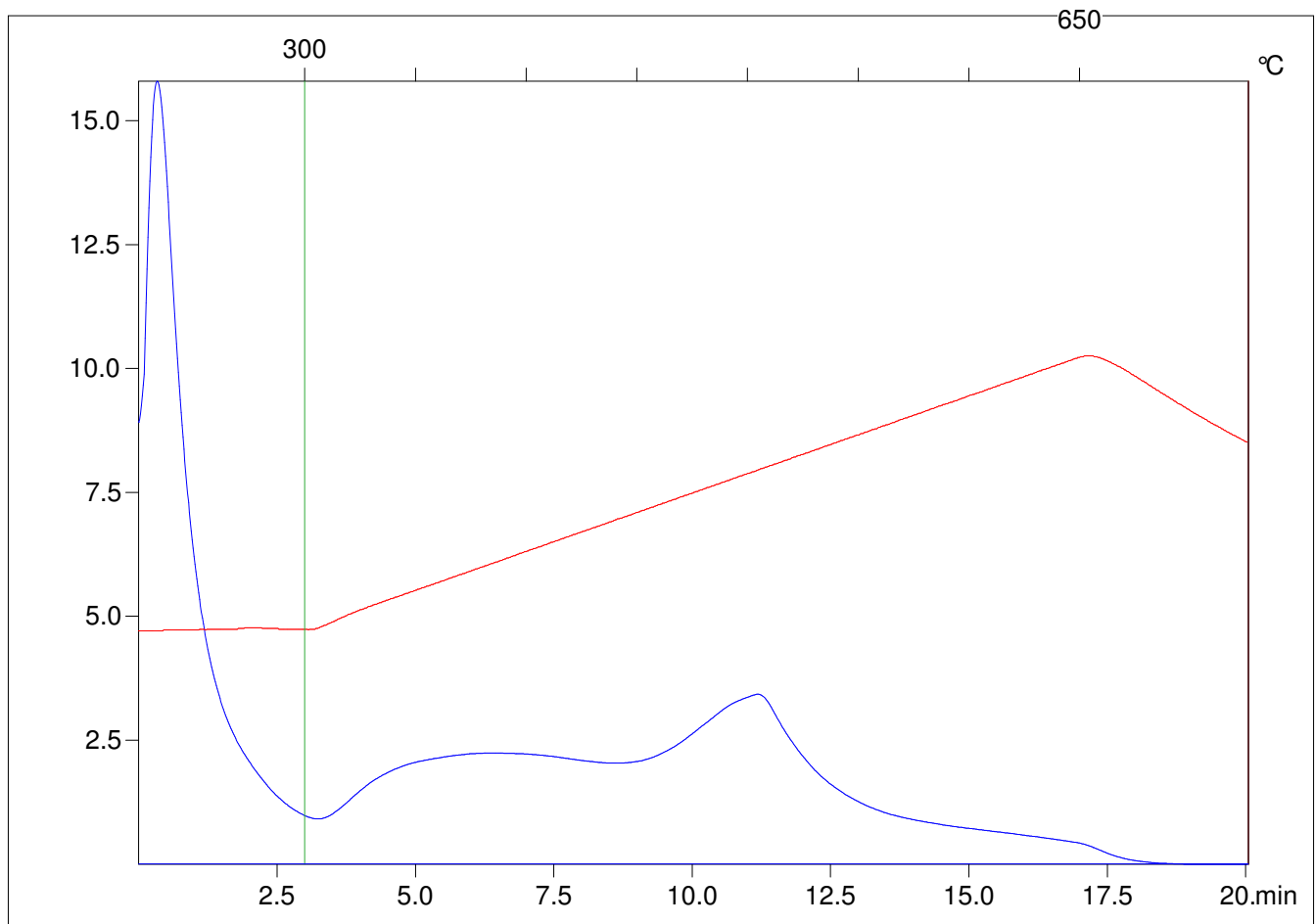
Method =Bulk Rock

Cycle=Basic

KFID(10*9)=1444

Qty =70.4

TOC=2.56



C:\VINC\PK1_1792\PK004.R00 : FID pyrolysis graphic

State

Pyro Status

Oxi Status